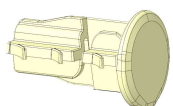


Fiber Optic Wall Installation Accessories

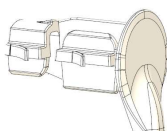
Wall-through tool & plugs



Wall-through tool



Discrete cable Ø0,9mm
wall plug



Cable < Ø2,3mm
Wall plug

To ensure a smooth and professional installation of the rolling extension box, dedicated accessories have been developed. The wall-through tool is specially designed to safely guide fiber optic cables through wall openings, protecting the delicate fibers from damage and enabling a neat, discreet deployment inside customer premises. To complete the solution, the wall plugs reduce cable stress and secure the installation, contributing to a durable and reliable setup.

TECHNICAL SPECIFICATION

- Wall-through tool
 - SC connector interface with clip-on protective cap
 - Integrated eyelet for attaching pulling tools
- Discrete cable wall plug
 - Compatible with Ø0.9 mm discrete cable.
 - Suitable for Ø12 mm to Ø14 mm wall holes.
 - Minimum bending radius: ≥ 5 mm (G657.B3 fiber compatible)
 - Reduced wall offset: 3 mm
- Cable wall plug
 - Compatible with cables < Ø2.3 mm or flat cables 3.3×2.3 mm
 - Suitable for Ø12 mm to Ø14 mm wall holes.
 - Minimum bending radius: ≥ 15 mm (G.657.A2 compatible)
 - Reduced wall offset: 5 mm

FEATURES & BENEFITS

- Safe cable passage
- Discreet installation
- Installation Time-saving
- Secure fixation
- Compatible with residential environments

RELATED PRODUCTS



SC/APC optical extension reel

CARACTERISTICS

CARACTERISTICS	WALL-THROUGH TOOL	DISCRETE CABLE Ø0,9MM WALL PLUG	CABLE < Ø2,3MM WALL PLUG
Dimensions (L x l x H)	262 x 13 x 13 mm	28 x 18 x 19 mm	30 x 18 x 22 mm
Weight	0,06 kg	0,002 kg	0,002 kg
Material	Plastic (PP)	Plastic (PP)	Plastic (PP)

PRODUCT RANGE

CODE	MODEL	PACKAGING	QUANTITY PER PALLET
1006251	OTM SC: Cross wall tool for SC simplex	150	2100
1008891	Wall plug for discrete cable	100	TBD
1008892	Wall plug for cable dia. <2,3 mm or flat 3,3x2,3mm	20	TBD
1004406	SC/APC optical extension reel cable dia 1.6mm B2ca 20m	80	1280